



# Spring Family Camp

April 24 - 26, 2026

Bellows AFS, Campsite #2 & #3

## CAMP CONDUCT

- **Before arrival, please remind your Scouts and children of appropriate conduct at Camp.**
- Everyone needs to wear closed toe, closed heel footwear. Slippers may be worn when showering only.
- Always use the buddy system, and never leave the campsite without informing your parent or adult leader.
- Please stay away from the fire bowls and barbecue areas.
- Please leave your electronic entertainment devices (e.g. video games, tablets, video players, etc.) at home. The only exceptions are cell phones for emergency purposes.
- For safety reasons, absolutely NO running after dark.
- You may run in the OPEN field during daylight hours. No running or playing near tents.
- No horse playing or rough housing. This includes: pushing, pulling, kicking, play fighting, nerf guns or stick-fighting.

## MEALS

- Friday – BYOD (Bring Your Own Dinner)
- Saturday – Breakfast, lunch, dinner, will be prepared with the assistance of the Den parents.
- Drinking water (water jug cooler) – Provided by the Pack. To help reduce the use of disposable cups, **please bring a water bottle/canteen and a hot/cold cup** (for water and hot cocoa).
- Drinks / beverages (other than water) – Each family will bring their own.
- **Please bring your own plates/bowls and utensils.** The Pack will provide wash basins after each meal to wash, rinse and sanitize dishes. Be sure to label your items.

Friday Dinner: BYOD  
 Saturday Breakfast: Pancakes, scrambled eggs, sausages, fruits  
 Saturday Lunch: Burgers, chips, fruits/veggies  
 Saturday Dinner: Walking tacos, taco salad  
 Saturday Campfire: S'mores, hot cocoa  
 Sunday Breakfast: Scrambled eggs, sausages, fruits

*\*\*menu subject to change*

## CAMP SCHEDULE

### Friday

4:00 pm Arrive & setup camp  
 6:00 pm Dinner (BYOD)  
 7:30 pm Flag retirement ceremony  
 8:00 pm Night activity:  
 Sand Crabs  
 9:00 pm Lights out  
 10:00 pm Parents lights out

### Saturday

7:30 am Breakfast Prep  
 8:30 am Breakfast  
 9:45 am Flag Ceremony  
 Class A uniform  
 Outdoor Code &  
 Leave No Trace  
 10:00 am Den time breakout  
 11:30 pm Lunch Prep  
 12:00 pm Lunch  
 2:00 pm Pack activity:  
 Water Rockets  
 3:00 pm Family Time  
 4:30 pm Dinner Prep  
 Dens practice skits  
 5:45 pm Lower Flag  
 Class A uniform  
 6:00 pm Dinner  
 7:00 pm Campfire  
 8:00 pm Lights out  
 10:00 pm Parents lights out

### Sunday

7:30 am Breakfast Prep  
 8:00 am Breakdown family tents  
 and base camp  
 Campsite rubbish sweep  
 10:00 am Depart

# Bellows AFS Info & FAQs

## **Important Camp Information:**

- **Attendees must RSVP and turn in clearance form by April 11th.** The Pack needs to submit a roster of non DoD personnel for the check-in process. We have a max limit of 15 tents per site (30 tents total for our reservation) and will be first-come, first-served.
- All vehicles will need current valid registration, safety check, and proof of insurance. Adults entering the base will also need to present a valid government-issued ID.
- **If you have not provided current copies of Scouting America Medical Forms A&B, please be sure to bring one (1) copy for each attendee (i.e., scouts, parents, siblings, etc.) to camp.**

## **Frequently Asked Questions:**

### **Do I need to go out and buy a tent?**

Yes and No. Most campsites we rotate through will require a tent. If you're ready to buy a tent but unsure of what's a good one, our veteran families and leaders can guide you in the right direction. If you're not able to buy a tent right now, don't hesitate to reach out to any of our leaders. We may have tents available to borrow.

### **Do I need to purchase a sleeping bag?**

Not necessarily. Sleeping bags are good for portability reasons. However, Cub Scout camping is also known as car camping and you can fit a lot more in your vehicle than a backpack. Hawaii's weather doesn't get too cold at night so blankets and pillows are acceptable. Lying directly on the ground draws heat away from the body, so it's recommended to use a sleeping pad, thick blanket, air mattress, or cot instead.

### **I cannot make it Friday through Sunday, is that okay?**

Yes. Most of our activities are on Saturday, including our den breakouts, service project, and campfire. Coming early on Saturday and leaving after the campfire is perfectly acceptable. Dens usually work on completing rank adventures during their breakout time. However, recent changes to Cub Scout adventures encourages an overnight stay for the camping adventure for all ranks. You can stay in the following scenarios; just RSVP in Scoutbook accordingly:

- Friday-Sunday (2 nights)
- Friday-Saturday (1 night)
- Saturday only (no nights)
- Saturday-Sunday (1 night)

### **What is parking like?**

The parking lot is a short walk (not a hike) from most campsites. You may need to provide your make/model/lic plate info for some campsites if you are staying overnight. Collapsible wagons are popular amongst the families to make loading and unloading easier. If you're bringing a large amount of equipment (like food, supplies, and/or gear for meals), unloading/loading options will be provided at the planning meeting.

### **Can we go swimming?**

Yes! Saturday afternoon following our pack activity is "Family Time". A parents/guardian must accompany their scout(s) and be present at the beach to ensure safety and appropriate behavior. Friday there is no swimming however we will be heading to the beach that evening for a crab hunt. Remember your flashlights and bring a scoop net if you have one!

# Bellows AFS Info & FAQs

## **Do I need to purchase a mess kit?**

It doesn't need to be the specialized camping mess kit. A washable plate, cup, bowl, and utensils are fine. A net bag is a good idea for air-drying.

## **I cannot make it; can my son or daughter stay with the den leader or his friend's parents?**

No. Per our Parent Handbook - Code of Conduct (Expectations of Parents): "It is the policy of Pack 564 that a parent or an adult family member accompanies the Scout on all Pack activities, including Pack Meetings." It is also against Scouting America policy to have children staying in tents with non-parent/guardian adults. Due to nature of the campout and the distance involved, there is no leniency on this.

## **Can we bring friends and cousins?**

No. It's been past practice not to allow Pack families to bring their friends. The reasons are that: 1) it detracts from the idea of a Pack Family Camp, where it's an opportunity for the Pack families to interact and get to know each other; 2) it's also a time when the scouts all get to interact and bond; and 3) since the Pack subsidizes the camp/activity fees, it's not fair to everyone that non-Pack associated families benefit from this.

## **Can we bring games and outdoor toys?**

Absolutely! Footballs, Frisbees, and any outdoor games are excellent during family time. We discourage water toys, squirt guns, nerf guns and swords. Board games are very popular, as are playing cards and other card games.

## **What about electronics?**

They are not recommended, as they provide a distraction from the great outdoors. Mobile phone reception can be spotty in the mountains anyway, so it's a good time to go off the grid. Please leave portable speakers at home as well.

## **It says bring your own dinner on Friday, what does that mean?**

The Pack doesn't prepare food for the group on Friday. Some families bring portable grills to make dinner, but most people grab a bento, subway sandwich, or dinner from home. You'll want to relax after setting up camp.

## **How do I RSVP?**

Login to Scoutbook via the app or go to <https://advancements.scouting.org>. Navigate to the calendar and select the camping event. Toggle the RSVP to 'Yes' for the scout(s) and adult(s) who will be attending.

Then in the comments field, enter how many total are coming (including spouses and siblings) and indicate if any children are less than 5 years old. Also include what day you will be coming and if staying overnight.

We may reach out to the Pack for any additional equipment needed for camp and list them in the event details in Scoutbook. Include in your RSVP comment if you are able to bring anything from the list, and we will contact you prior to camp to let you know if it is still needed.

## **What should I pack?**

See the included packing list below. Do not forget: water bottles, sunscreen, insect repellent, hand sanitizer or wipes, work gloves and closed-toed shoes. Bring a poncho, just in case, even though you're forbidden from uttering the "R" word.

# My Packing List

- Cub Scout uniform, hat, neckerchief, belt  
Uniforms will be worn during morning and evening flag ceremonies.

*Tip: To prevent neckerchief slides from being lost, tie a simple overhand knot and place the Neckerchief slide over it.*

- Pack activity t-shirt  
*Will be worn for Saturday daytime activities.*

- Camping chairs
- Tent
- Sleeping bag or blankets, pillow
- Sleeping pad, thick blanket, air mattress, or cot
- Change of clothes (including shirts, shorts, long pants, underwear, socks)
- Sleepwear (sweatshirt and pants for cool nights)
- Clothes for water activities
- Raincoat, poncho, umbrella
- Warm jacket
- Durable closed-toe / closed-heel shoes or boots (depending on weather)

*Shoes should always be worn in and around camp. Crocs are not considered shoes.*

- Slippers (for showering)
- Bath towel, wash cloth

- Toothpaste, toothbrush, soap, shampoo
- Toilet paper
- Extra plastic bags (for dirty clothes and other uses)
- Mess kit (reusable plate, bowl, hot/cold mug, fork, spoon, knife, mesh bag)
- Water bottle  
*The Pack normally provides a water cooler to refill water bottles.*
- Flashlight, batteries
- Lantern / LED headlamp
- Sunscreen
- Insect repellent
- Personal first aid kit
- Camera
- Cooler or sealed food storage
- Dinner (for Friday night)
- Drinks, snacks (for your family)
- Low tech entertainment - i.e. books, notebook, bug catcher, card games, binoculars, board games. Please leave electronics and toys at home.



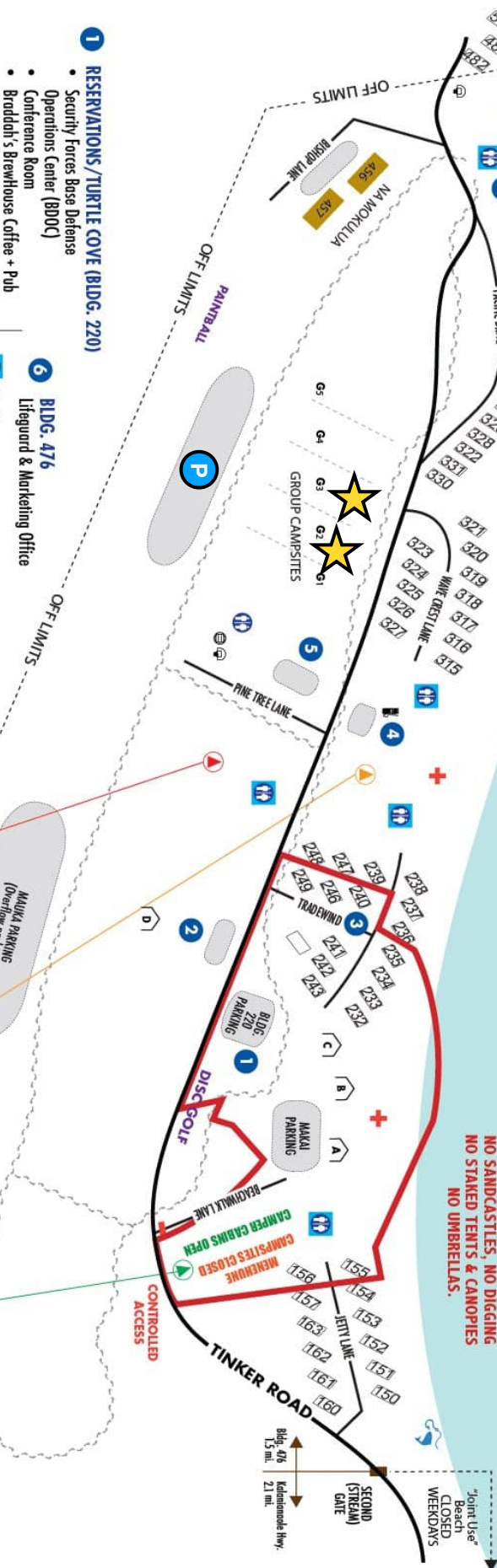


**APPROVED KAKAKING AREA**  
 (Stay within reef breaks.)

**NO GROUND DISTURBING ACTIVITIES**  
**WITHIN THESE BOUNDARIES**

**NO SANDCASTLES, NO DIGGING**  
**NO STAKED TENTS & CANOPIES**  
**NO UMBRELLAS.**

Joint Use Beach CLOSED WEEKDAYS



- RESERVATIONS / TURTLE COVE (BIDG. 220)**
  - Security Forces Base Defense Operations Center (BDOC)
  - Conference Room
  - Bradish's Brewhouse Coffee + Pub
  - Lama/Deck
  - Information, Tickets and Tours (ITT)
  - Outdoor Recreation Adventures
  - Gear/Party/Sports Equipment Rentals
  - Hole Moku Massage Appointments
  - Turtle Cove Retail Store
- GOLF SHACK**  
 Miniature Golf and Driving Range
- HALE NALU MASSAGE**  
 Call (808) 258-4135 for appointments
- AAFS EXPRESS, SUBWAY**  
 Shopette, Launderette, Gas Pump
- HEADQUARTERS BLDG. 515**  
 Command Section

- BIDG. 476**  
 Lifeguard & Marketing Office
- Bathhouse**
- Restroom**
- Lifeguard Tower**
- Pavilion**
- Parking**
- Fishing Areas**
- Fishing permitted by rental occupants only**

**NA MOKULIA**

**456**  
 1st floor: N101 - N104  
 2nd floor: N201 - N204

**457**  
 1st floor: I105 - I108  
 2nd floor: L205 - L208

**FAMILY CAMPSITE - LETTERED**

**FAMILY CAMPSITE - OCEANVIEW**

**FAMILY CAMPSITE - MENEHUNE CEDAR CAMPER CABINS**

**MAKA PARKING (Overflow parking)**

**MAKA PARKING**  
 Limited to handicap, shuttle, drop off/pick up only.

**MAKA PARKING**  
 General, overflow parking. No parking on grass.

**BIDG. 220 PARKING**  
 No parking, authorized vehicles only.

**BELLOWS LOOP TRAIL**  
 This three-mile loop connects the multi-use path and hiking trail. Closed after dark.

